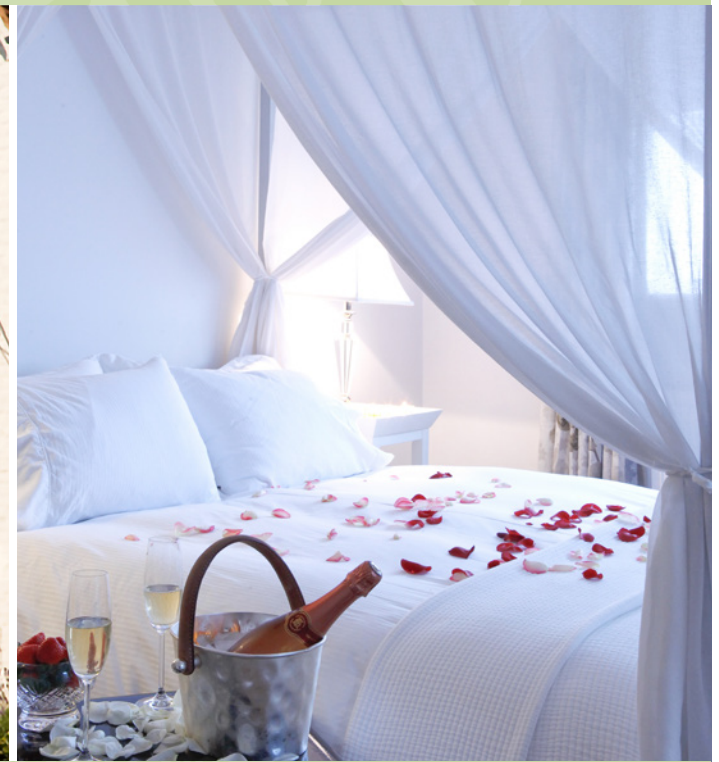


BRAY HOUSE

BRAY-ON-THAMES



BRAY HOUSE



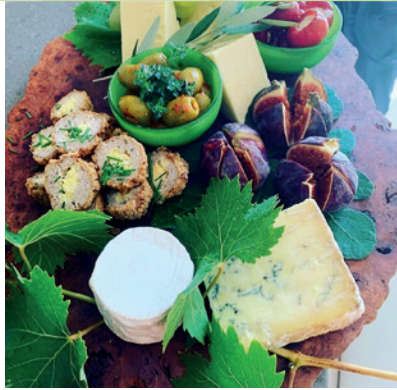
Bray House - Sleeps 6

Situated in the heart of the picturesque village of Bray-on-Thames, Berkshire, Bray House originally started as the stables for the nearby Manor House of Bray in the 1780s. Over the years, the residence has been converted many times, ranging from a cobbler's shop, an antique centre and a family home. Formally acquired by MUSE in 2008, Bray House has been dramatically re-designed and sympathetically restored to maintain the original character and historical features of one of the finest residences in Bray.

Bray House is just steps away from a picturesque country lane leading to the church, and yards from the beautiful Lynch-gate which dates back to 1488, the age of Charles II. From the moment you enter this enchanting house, you will be taken on a journey that encompasses many eras from the 1700s to the present and captivated by its charm.

As you enter you are immediately drawn past the original 1780 stable door and into the impressive, spacious living room. The living room leads to a stunning courtyard garden, perfect for predinner cocktails or a gorgeous summer morning breakfast, al fresco. A secret beautifully located private bar can also be enjoyed on the ground floor.

BRAY HOUSE



Chefs kitchen & garden area for alfresco dining

Modern indulgences include a professional kitchen, specially designed as a focal point for family gatherings, informal breakfasts and suppers. Facilities include all the latest high-tech equipment such as a specially imported induction wok, cappuccino machine, three ovens and a large American fridge freezer. Enjoy special dining experiences with our original 1920s china and glassware.

BRAY HOUSE



Master Bedroom

In our master bedroom suite, every attention to detail has been considered in creating a haven of comfort. Designed to enhance on the original 18th century features of this historical house, the suite has been built around the pitched roof and wooden beams. The sumptuous bed promises to give you one of the most comfortable nights sleep ever. It sits beautifully within the eaves with a view of the courtyard gardens below.

The unusual shape of the room reveals hidden corners that have been used to dramatic effect revealing a magnificent bathroom with its modern scroll bath, walk through shower and twin vanities.

Five different moods of lighting create the perfect atmosphere of this luxurious suite complete with original artwork and the finest amenities.

BRAY HOUSE



The Loft Suite

This stunning bedroom has its own private balcony overlooking the picturesque gardens. The focal point is a dramatic four-poster queen-sized bed dressed with fine linens. The calm and muted colours extend a warm and inviting ambience. The private ensuite wet-room is spacious and provides every required amenity including under-floor heating, luxurious towels and robes and a full range of bathing products.

BRAY HOUSE



The White Suite

As a total contrast to the Amber Suite, this suite has an air of peace and tranquillity. The stunning Italian four-poster queen-sized bed with its white drapes overlooks the pretty centre of Bray. Subtle lighting, candles, a dressing table and iPod docking station together with flower arrangements, complete the look of this pretty room.

The en-suite wet-room with its mother-of-pearl tiling is a truly inviting aspect of this suite. Facilities include a white leather feature vanity unit, luxurious white towels and robes and a full range of matching bathing products.

BRAY HOUSE



The Party House

Bray House is truly a "party house" for celebrating special occasions. In addition to enjoying such famous restaurants as the world renowned Fat Duck, the Waterside Inn and Caldesi in Campagna, private dining experiences can be arranged with your personal chef serving up culinary creations from the professionally-fitted kitchen (details and prices upon request).

BRAY HOUSE



From £1500 per night - The rental of your cottage includes the following:

- The exclusive use of your chosen cottage and all facilities and amenities.
- Personal meet and greet and show around on arrival.
- An array of breakfast ingredients, most of which are organic, including: fresh fruit, speciality breads, jams, yoghurts, smoothies, fruit juices, farm fresh eggs, bacon, baked beans, tomatoes, fair trade coffee and a wonderful selection of Jing teas.
- Complimentary drinks of whisky, artisanal gin with fever tree mixers, along with a welcoming decanter of delicious organic sloe gin.
- Lighting of the fire and pretty candles during the winter months, together with your choice of soft music.
- Pretty flowers by the bedside.
- Internet access and Sky glass TV.
- Use of our concierge service for the booking of restaurants or activities.

You are most welcome to bring your own wines and champagnes. However, we are very happy to organise these on your behalf together with any additional food and beverage requirements you may have (at an additional cost).

BRAY HOUSE

TO BOOK CALL:
+44 (0) 1628 583 505



Our concierge service includes the organisation of the following arrangements:

- Restaurant reservations for lunch or dinner at any of the establishments in Bray-on-Thames including The Fat Duck (where possible but not guaranteed), the Waterside Inn, the Brasserie at Monkey Island Estate, Caldesi in Campagna, The Hinds Head, Roux at Skindles and The Crown at Bray.
- Private transfer arrangements to and from the airport and train station.
- Organisation of activities including: boat trips along the Thames, picnic baskets, spa treatments, horse riding, etc.



MUSE BRAY COTTAGES

For enquiries or reservations, please contact

T: +44 (0)1628 583 505 M: +44 (0)7710 039 058

For further information email info@braycottages.com

or visit www.braycottages.com

Exclusively represented by Private Label Worldwide www.privatelabelww.com