

**FIRST SNOW OFFERS: YOUR WHITE SEASON GETAWAY AWAITS**

**NISEKO, JAPAN – 30 October 2024** – Make the most of your White Season holiday in Niseko Village with our exclusive First Snow offers, valid for stays from 1 to 15 December 2024. Don't miss out on this spectacular opportunity!

**Delight In Every Season At The Green Leaf Niseko Village**

**The Green Leaf Niseko Village** offers an exceptional stay in a prime location to fully enjoy Niseko Village's snowy terrain. The hotel seamlessly blends modern design with nature's charm to create a warm and inviting atmosphere. Guests can enjoy the hotel's various amenities including ski-in, ski-out access, and a variety of dining options showcasing local seafood and seasonal Hokkaido produce.

For a limited time, indulge in an unforgettable stay starting from JPY 26,937 nett per room per night. This enticing package includes accommodation for two in a Deluxe Room, daily buffet breakfast, and a complimentary dinner to enhance your experience. Guests will also get to enjoy complimentary wireless internet, and unlimited access to our serene onsen and thermal pool.

### Embracing Shibumi At Kasara Niseko Village

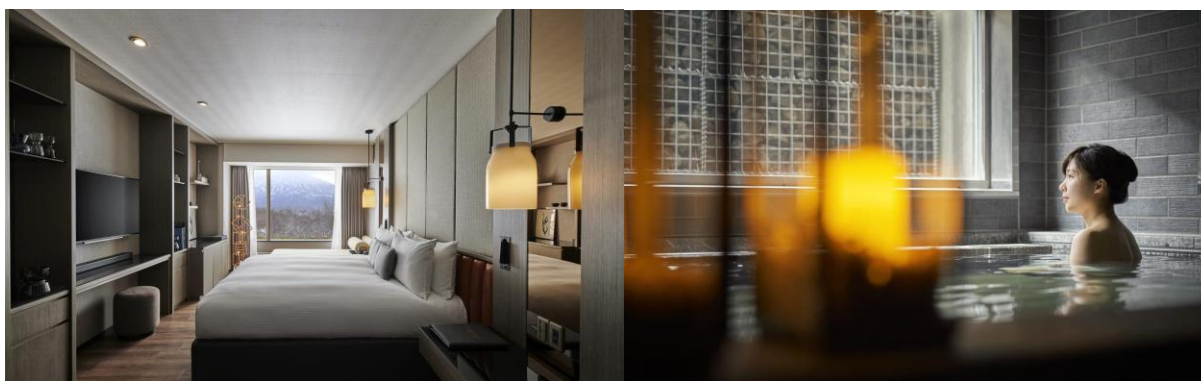


Enjoy a quaint retreat at the base of Mount Niseko Annupuri in **Kasara Niseko Village Townhouse**. These meticulously designed townhouses blend traditional Japanese aesthetics and modern comforts, with a range of amenities including convenient ski-in, ski-out access. Reflecting a harmonious balance of serenity and sophistication, Kasara incorporates the principles of *shibumi* to create an understated yet beautiful sanctuary. Guests can enjoy the luxury of their own private onsen in selected townhouses, where they can relax in the gentle waters of Hokkaido, adding to their overall stay experience.

Experience the ultimate getaway with our limited-time offer starting from JPY 104,340 nett per night for a luxurious 3-bedroom townhouse. This package includes a dedicated driver on call within Niseko Village Resort from 8 am to 10 pm, one complimentary dinner, and exceptional concierge service.

Guests can also enjoy complimentary wireless internet and unlimited access to the onsen and thermal pool at The Green Leaf Niseko Village.

### A New Day At Hinode Hills Niseko Village



Stay in the epitome of class at the ski-in, ski-out apartments of **Hinode Hills Niseko Village**. Enjoy breathtaking views of Mount Yotei in a residence that champions *wabi-sabi* aesthetics, celebrating natural beauty and authenticity in their interiors. This refined retreat provides the perfect blend of style and comfort for guests to enjoy.

Immerse yourself in luxury with our limited time offer starting from JPY 29,600 nett per suite per night. This enticing package includes phenomenal concierge service and one complimentary dinner, ensuring a delightful stay. Guests can also enjoy complimentary wireless internet and unlimited access to our rejuvenating onsen and thermal pool.

To make your ski adventure even more enjoyable, guests of all three properties will be able to take advantage of a 15% discount on mid-range skis, boots, and poles, or mid-range snowboards and boots. Plus, strengthen your skills on the slopes with a 20% discount on private ski or snowboard lessons at Niseko Village Snow School, and enjoy a 20% discount on the Niseko Village Lift Pass.

Book your White Season getaway today for an enchanting time in Niseko Village!

###

### About Niseko Village

Located at the south base of the 1308m Mount Niseko Annupuri, Niseko Village stands as a premier all-season destination nestled within the Niseko United ski area. This vast expanse offers access to inter-linked ski resorts boasting a combined 2,191 acres of skiable terrain, drawing comparisons to global skiing heavyweights like Aspen in Colorado and Niseko's sister city, St. Moritz in Switzerland. Central to Niseko Village's appeal is Niseko-yo, an unparalleled lifestyle experience where gastronomy, shopping, and nightlife converge amidst the captivating Hokkaido backdrop. Niseko Village encompasses Higashiyama Niseko Village, A Ritz-Carlton Reserve, one of only five Ritz-Carlton Reserves worldwide, recently honoured with a One MICHELIN Key, and the exclusive Kasara Niseko Village Townhouse, redefining alpine luxury. Also featured are Hinode Hills Niseko Village, a unique blend of residential space with luxury hotel services, and Hilton Niseko Village, which has thrice been voted 'Best Ski Resort Hotel in Japan' by World Ski Awards. The Green Leaf Niseko Village, spa and onsen facilities, a vibrant dining and retail village hub, the Niseko Village ski field - renowned for its signature dry champagne powder at low altitudes, diverse ski terrains, and the world-class Niseko Village Snow School and Niseko Kids™ programmes, all contribute to its esteemed reputation.

Find us on Facebook/Instagram [@nisekovillage](#) | [@niseko.yo](#)

### About YTL Hotels

YTL Hotels owns and manages a prestigious collection of award-winning resorts, hotels, boutique experiences, and Spa Villages, with a hospitality footprint across Malaysia, Thailand, Japan, Australia, France, the Netherlands, and the United Kingdom. Notable properties include Pangkor Laut Resort, voted the World's Best Resort in 2003 by Condé Nast Traveller UK and ranked among the Top 20 Best Resorts in Asia in the 2023 Condé Nast Traveler Readers' Choice Awards US. The Gainsborough Bath Spa, part of the Small Luxury Hotels of the World's prestigious collection, was ranked the 6th Best Hotel in the UK in the 2024 Condé Nast Traveller Awards. It has also been consistently listed as one of the Top Destination Spa Resorts in the World in both the 2022 and 2023 Condé Nast Traveler Readers' Choice Awards US. Additionally, both The Gainsborough Bath Spa in the UK and Higashiyama Niseko Village, a Ritz-Carlton Reserve in Japan, have earned the prestigious Michelin Key. The Ritz-Carlton, Koh Samui was recognised in the 2023 Condé Nast Traveler Readers' Choice Awards US as one of the Top 15 Best Resorts in Thailand. Furthermore, Monkey Island Estate, Gaya Island Resort, and The Ritz-Carlton, Koh Samui have been named in the 2025 edition of Fodor's Finest as some of the Most Incredible Hotels in the World.

YTL Hotels' portfolio embodies the brand's promise of "Treasured Places, Treasured Moments" and includes the ownership and management of several Marriott International properties in Malaysia, Japan, Thailand, and Australia. This also encompasses distinctive hotels under the Autograph Collection and AC Hotels banners. Notable properties within the Marriott International partnership include The Majestic Hotel Kuala Lumpur, JW Marriott Kuala Lumpur, and Hotel Stripes Kuala Lumpur. The collaboration further features prominent hotels like The Ritz-Carlton, Koh Samui, and Higashiyama Niseko Village, a Ritz-Carlton Reserve, which was named one of TIME's World's Greatest Places 2021. As Japan's first Ritz-Carlton Reserve, it plays a key role in YTL Hotels' master plan for Niseko Village.

### FOR MEDIA ENQUIRIES, PLEASE CONTACT:

#### Geraldine Dreiser

Vice President - Marketing & Communications

Email: [geraldine@ytlhotels.com](mailto:geraldine@ytlhotels.com)

#### Jessica Guzowski

Marketing & Communications

Email: [jessica.guzowski@ytlhotels.com](mailto:jessica.guzowski@ytlhotels.com)