



GREEN SEASON COMES ALIVE AT NISEKO VILLAGE

NISEKO, JAPAN – 25 April 2025 – As the seasons change, Niseko Village transforms into a lush green retreat, offering a dynamic mix of outdoor adventures, cultural experiences, and seasonal delights. From the upgraded PURE Nature Park to exciting new stay packages, this Green Season promises an unforgettable escape into nature's playground. Whether you're drawn by cherry blossoms, thrilling activities, or world-class golf, Niseko Village has something for everyone this summer.

DIVE INTO SUMMER FUN WITH NISEKO VILLAGE'S PACKAGES AND ADVENTURE PAIRINGS



Experience World-Class Golfing at Niseko Village in 2025

Niseko Village invites golf enthusiasts to experience two world-class courses, both set against the breathtaking backdrop of Mount Yotei. The Niseko Village Golf Course is known for its scenic fairways and has earned top honours at the World Golf Awards for three consecutive years. Meanwhile, the Arnold Palmer-designed Niseko Golf Course features 18 challenging holes with lush greens and signature par 3 and par 5 holes, offering golfers the chance to score birdies and eagles.

With the Niseko Golf Course opening from April 24 to November 9, 2025, and the Niseko Village Golf Course opening

from May 17 to October 19, 2025, make the most of your stay with our exclusive Golfing Getaway package. Enjoy a complimentary round of golf for every night you stay, along with daily breakfast, a set dinner at the Bistro restaurant, and access to the onsen at Hinode Hills Niseko Village.



Feel the Rush with White-Water Rafting at Niseko Village

For those seeking an exhilarating water adventure this Green Season, embark on a thrilling white-water rafting experience on the Shiribetsu River. Paddle through the river's dynamic rapids, surrounded by the breathtaking natural beauty of Niseko. This exciting adventure offers a refreshing way to explore the region while creating unforgettable memories.

With white-water rafting sessions available from April 26 to October 31, 2025, take on the rapids with our Summer Adventure package. Enjoy one exhilarating white-water rafting session, daily breakfast, a set dinner at the Bistro restaurant, and wind down with your complimentary access to the onsen at Hinode Hills Niseko Village.



Cycle Through Niseko's Scenic Wonders

Swap the confines of four walls for the open road and explore Niseko's breathtaking beauty on two wheels. With an e-bike adventure, you can effortlessly cruise through lush forests, serene lakes, and picturesque villages, all while enjoying the freedom of the open air. Whether you're after a leisurely ride or a more thrilling exploration, e-bikes offer the perfect way to experience Niseko's hidden gems.

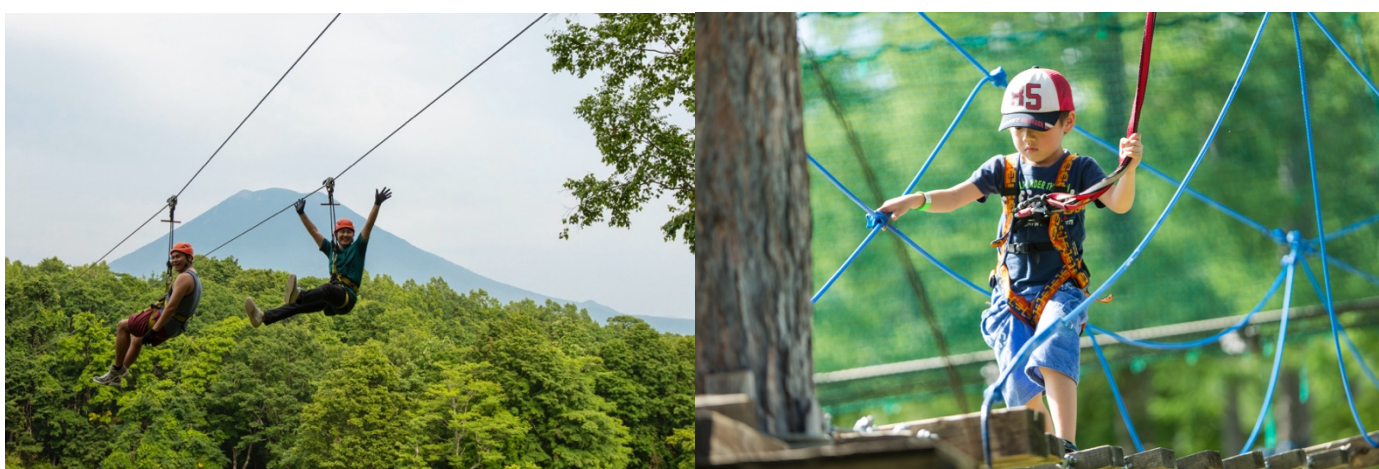
With e-bike rentals available from April to October 2025, embark on a stunning scenery journey with our E-Bike Summer Exploration package. Enjoy 3 hours of e-bike rental, along with daily breakfast, a set dinner at the Bistro restaurant, and access to the onsen at Hinode Hills Niseko Village to experience at your leisure.

Niseko Village offers an unforgettable summer, from world-class golfing and thrilling white-water rafting to scenic e-bike adventures. Whether you're seeking excitement or relaxation, our exclusive packages provide the perfect way to enjoy Niseko's natural beauty. For more information, visit <https://www.hinodehills.com/special-offers.html>.

Niseko Village Summer Experience

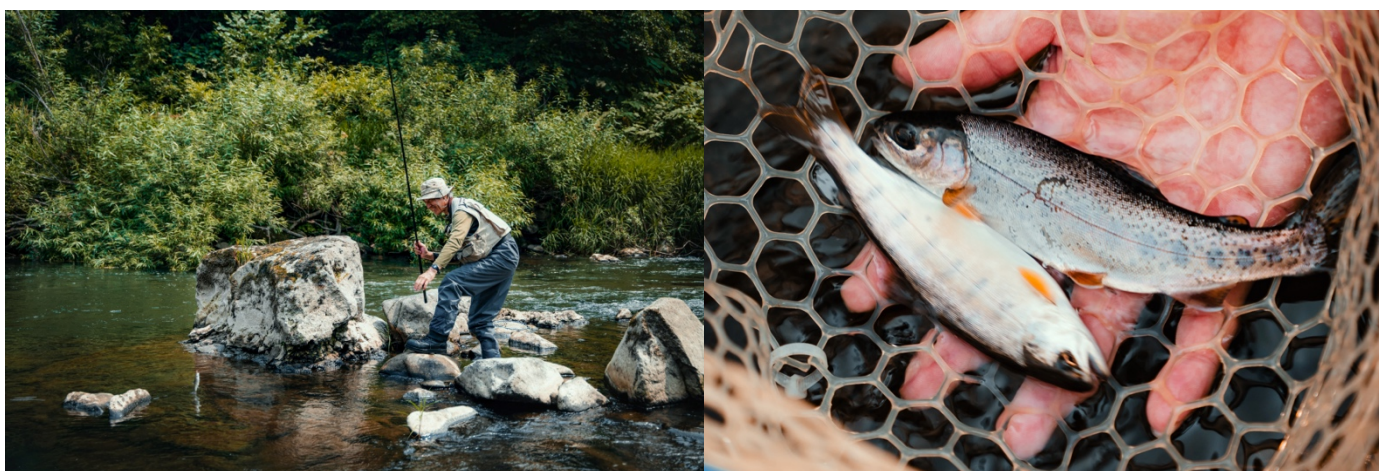
For those seeking more adventure, the Niseko Village Summer Experience package combines the thrill of white-water rafting and scenic e-bike exploration into a 3-day, 2-night itinerary. Available from July 1, 2025, this exclusive package offers the ideal balance of action and relaxation, with white-water rafting on Day 2 and an e-bike adventure on Day 3. Enjoy daily breakfast, onsen access, and local dining recommendations, making it the ideal way to experience Niseko's stunning summer landscape.

MORE SUMMER HIGHLIGHTS TO DISCOVER



PURE at Niseko Village Gears Up for an Exciting Upgrade

PURE at Niseko Village is evolving with thrilling new upgrades, bringing even more adventure to the heart of nature. While the PURE Zip Line Tour, an exhilarating 1.4km ride through the forest canopy, and the one-of-a-kind Rail Slider have set the stage for high-flying excitement, a brand-new interactive play zone is set to debut this July. Inspired by the beloved mascots of the Niseko Village Kids Club, the upcoming Fuwa-Fuwa Adventure Zone will offer a playful mix of discovery and fun for kids and adults alike. Stay tuned for the full story coming this May, as PURE continues to grow into the ultimate summer playground.



Cast Your Line in Niseko's Pristine Waters

Niseko is a fishing paradise, where crystal-clear rivers wind through breathtaking mountain landscapes, offering an ideal environment for both bait fishing and fly-fishing. The Shiribetsu River, renowned for its prime trout and salmon angling, provides an exciting yet relaxing escape for anglers of all levels. Whether you're looking to catch the season's best or simply enjoy the serene beauty of Niseko's rivers and streams, this destination promises unforgettable experiences. Fishing in Niseko is available from mid-May to October 2025.



A Summer of Exciting Events

From July 1–August 31, 2025, guests can look forward to a daily shuttle service from JR Sapporo Station to Niseko Village, making it easier than ever to join in the seasonal fun.

Over at Chuya, a daily barbecue and beer garden will run throughout the same period, from 11 AM to 8 PM, with live music and DJ sets every Saturday evening (5:30 PM to 7:30 PM) adding extra atmosphere to sunset gatherings.

The summer buzz doesn't stop there. Get ready for a lively weekend at Niseko Village's Niko Niko Summer Festival! Happening at Niseko-yo on July 19–20, 2025, this exciting event brings together live music, delicious food, and fun mini-events for all ages. As the festivities wind down, a spectacular fireworks finale will light up the night sky, creating a magical summer experience against the stunning backdrop of Mount Yotei.

And during Obon Week (August 9–17, 2025), the tempo picks up with live local music and DJs every evening to celebrate this meaningful holiday in true summer style. Not only that, Niseko Village's event calendar is packed with activities that allow visitors to immerse themselves in Hokkaido's stunning landscapes and rich traditions:

- Lake Toya Marathon (May 18, 2025): Run through picturesque lake views and embrace the beauty of Lake Toya's natural surroundings.
- Niseko Classic Road Race (June 13–15, 2025): A pre-event to the 2026 UCI Gran Fondo World Championships Niseko, challenging cyclists with steep hills and rewarding them with breathtaking views.
- Niseko Tanabata Matsuri (August 2, 2025): A magical festival known for its dazzling fireworks and festive atmosphere.
- Niseko Village Beer Garden (August 9–12, 2025): Enjoy an array of beers, light snacks, and live entertainment in an open-air setting.

For the full event calendar, visit: [Niseko Village Events](#)



Delight in the Tranquil Beauty of Niseko's Cherry Blossoms

As the snow-capped landscape of Niseko transitions into spring, a delicate transformation takes place. From late April to early May, cherry blossoms, known as Sakura, grace the region, creating an enchanting spectacle. Amidst this natural beauty, golfers at the Niseko Golf Course have a unique opportunity. Picture yourself teeing off amidst soft petals, with the iconic Mount Yotei framed by the blossoms, a serene and picturesque experience that combines sport and nature in harmony.

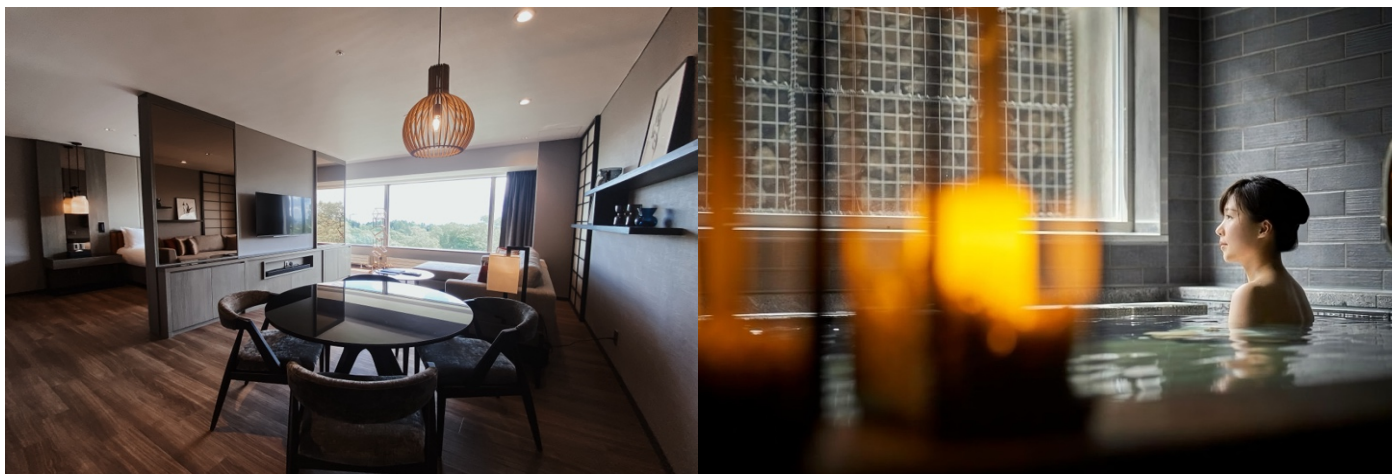
TASTE THE BEST OF NISEKO-YO'S CULINARY OFFERINGS



Exceptional Dining Meets Breathtaking Views at Niseko-yo

Niseko-yo is a culinary haven for food lovers, offering a diverse selection of dining options. Gogyo, powered by Ippudo, serves up comforting ramen by day and transforms into a cozy izakaya by night, offering expertly grilled seasonal delicacies. For those seeking an authentic taste of Shanghainese cuisine, Long Tang is a must-visit, serving up delicate dim sum and flavourful Xiao Long Baos. Hokkai-ten offers an exceptional yakiniku experience, where premium cuts of meat are grilled to perfection, while Chuya Wine Bar provides a charming atmosphere to enjoy local wines and savory bites. Whether you're after traditional comfort food or an exotic culinary adventure, Niseko-yo delivers an unforgettable dining experience.

MEMORABLE NISEKO STAYS FOR EVERY TYPE OF ADVENTURE



A Boutique Escape at Hinode Hills

Nestled in the heart of Niseko Village, Hinode Hills combines boutique apartments with contemporary comfort and traditional Japanese design. Ideal for couples, small families, and solo adventurers, it offers a seamless blend of modern luxury and cultural charm. Located at the base of Mount Niseko Annupuri and offering stunning views of Mount Yotei, Hinode Hills provides an ideal escape for year-round outdoor adventures, cultural events, and exceptional dining experiences. Whether you're skiing in winter or exploring in summer, the setting ensures a picturesque and tranquil getaway.



Gather and Unwind at Kasara Niseko Village Townhouses

For larger groups or extended families, Kasara Niseko Village Townhouses offer the ultimate in spacious luxury and cultural immersion. These eight exclusive townhouses feature a blend of traditional Japanese aesthetics and modern comfort, designed for those seeking both adventure and a connection to heritage. Available in select townhouses, private onsen baths offer a rare and refined indulgence. Set within the privacy of each residence, these natural hot springs invite guests to immerse in stillness and soothing warmth. With personal resident concierges attending to every need, each townhouse provides an authentic, luxurious experience that fosters relaxation and togetherness. Ideal for group retreats, the townhouses offer ample space and private luxury, making it an excellent base for unforgettable experiences with family and friends, no matter the season.

###

About Niseko Village

Located at the south base of the 1308m Mount Niseko Annupuri, Niseko Village stands as a premier all-season destination nestled within the Niseko United ski area. This vast expanse offers access to inter-linked ski resorts boasting a combined 2,191 acres of skiable terrain, drawing comparisons to global skiing heavyweights like Aspen in Colorado and Niseko's sister city, St. Moritz in Switzerland. Central to Niseko Village's appeal is Niseko-yo, an unparalleled lifestyle experience where gastronomy, shopping, and nightlife converge amidst the captivating Hokkaido backdrop. Niseko Village encompasses Higashiyama Niseko Village, A Ritz-Carlton Reserve, one of only five Ritz-Carlton Reserves worldwide, recently honoured with a One MICHELIN Key, and the exclusive Kasara Niseko Village Townhouse, redefining alpine luxury. Also featured are Hinode Hills Niseko Village, a unique blend of residential space with luxury hotel services, and Hilton Niseko Village, which has thrice been voted 'Best Ski Resort Hotel in Japan' by World Ski Awards. The Green Leaf Niseko Village, spa and onsen facilities, a vibrant dining and retail village hub, the Niseko Village ski field - renowned for its signature dry champagne powder at low altitudes, diverse ski terrains, and the world-class Niseko Village Snow School and Niseko Kids™ programmes, all contribute to its esteemed reputation.

Find us on Facebook/Instagram [@nisekovillage](#) | [@niseko.yo](#)

About YTL Hotels

YTL Hotels owns and manages a prestigious collection of award-winning resorts, hotels, boutique experiences, and Spa Villages, with a hospitality footprint across Malaysia, Thailand, Japan, Australia, France, the Netherlands, and the United Kingdom. Notable properties include Pangkor Laut Resort, voted the World's Best Resort in 2003 by Condé Nast Traveller UK and ranked among the Top 20 Best Resorts in Asia in the 2023 Condé Nast Traveler Readers' Choice Awards US. The Gainsborough Bath Spa, part of the Small Luxury Hotels of the World's prestigious collection, was ranked the 6th Best Hotel in the UK in the 2024 Condé Nast Traveller Awards. It has also been consistently listed as one of the Top Destination Spa Resorts in the World in both the 2022 and 2023 Condé Nast Traveler Readers' Choice Awards US. Additionally, both The Gainsborough Bath Spa in the UK and Higashiyama Niseko Village, a Ritz-Carlton Reserve in Japan, have earned the prestigious Michelin Key. The Ritz-Carlton, Koh Samui was recognised in the 2023 Condé Nast Traveler Readers' Choice Awards US as one of the Top 15 Best Resorts in Thailand. Furthermore, Monkey Island Estate, Gaya Island Resort, and The Ritz-Carlton, Koh Samui have been named in the 2025 edition of Fodor's Finest as some of the Most Incredible Hotels in the World.

YTL Hotels' portfolio embodies the brand's promise of "Treasured Places, Treasured Moments" and includes the ownership and management of several Marriott International properties in Malaysia, U.K., Europe, Japan, Thailand, and Australia. This also encompasses distinctive hotels under the Autograph Collection, AC Hotels and Moxy banners. Notable properties within the Marriott International partnership include The Ritz-Carlton Kuala Lumpur, JW Marriott Kuala Lumpur, The Majestic Hotel Kuala Lumpur, and Hotel Stripes Kuala Lumpur, as well as Threadneedles Hotel in London and The Glasshouse Hotel in Edinburgh. The collaboration further features prominent hotels like The Ritz-Carlton, Koh Samui, and Higashiyama Niseko Village, a Ritz-Carlton Reserve, which was named one of TIME's World's Greatest Places 2021. As Japan's first Ritz-Carlton Reserve, it plays a key role in YTL Hotels' master plan for Niseko Village.

Find us on Facebook/Instagram/YouTube: [@ytlhotels](#)

FOR MEDIA ENQUIRIES, PLEASE CONTACT:

Geraldine Dreiser

Vice President - Marketing & Communications

Email: geraldine@ytlhotels.com