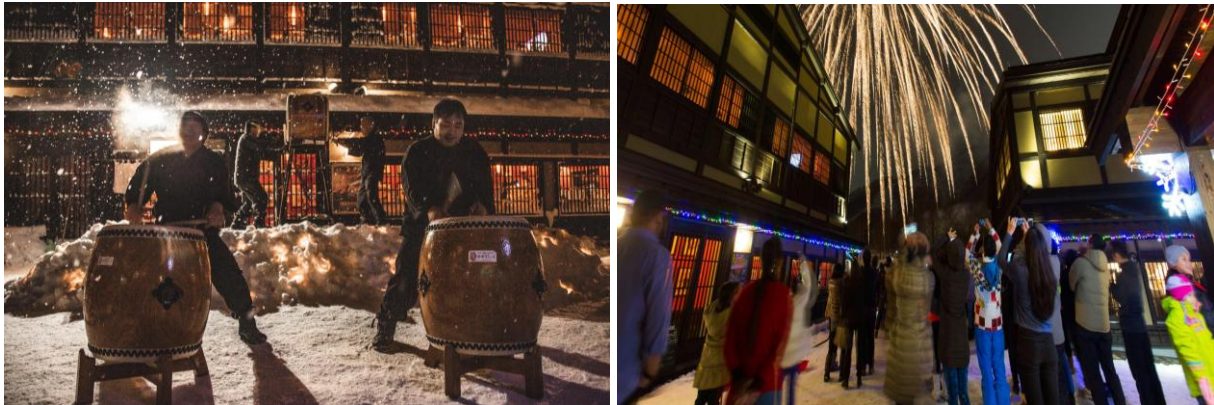


NISEKO VILLAGE: EMBRACE THE BEST OF WHITE SEASON



NISEKO, JAPAN - 30 October 2024 – Niseko Village, Hokkaido - Experience Niseko Village, often hailed as the "Aspen of the East," as it transforms into a winter wonderland with the arrival of the beloved White Season, running from early December to May. This enchanting period brings an impressive annual snowfall of 18 metres, creating a paradise of exceptional off-piste terrain, groomed runs for all skill levels, and sensational snow-based activities that go beyond traditional skiing. Niseko Village is equipped with a range of facilities to ensure seamless access to your winter adventures, including an efficient lift system, comprehensive ski rental services, and the renowned Niseko Village Snow School.

With its endless powder, exhilarating adventures, and breathtaking scenery, Niseko Village truly stands out as one of the world's premier winter destinations.

Snow Machine Festival Brings Epic Skiing And Music to Niseko Village In 2025



Niseko Village is set to host the highly anticipated Snow Machine Music Festival from March 10-15, 2025. Skiers and snowboarders will enjoy world-class powder by day and an electrifying lineup of international artists by night. The festival merges skiing with music in a breathtaking alpine setting, offering an unforgettable experience of 'Après Ski All Day.' With acts like Chase & Status, Hot Chip, and Melanie C, Snow Machine promises an epic winter adventure.

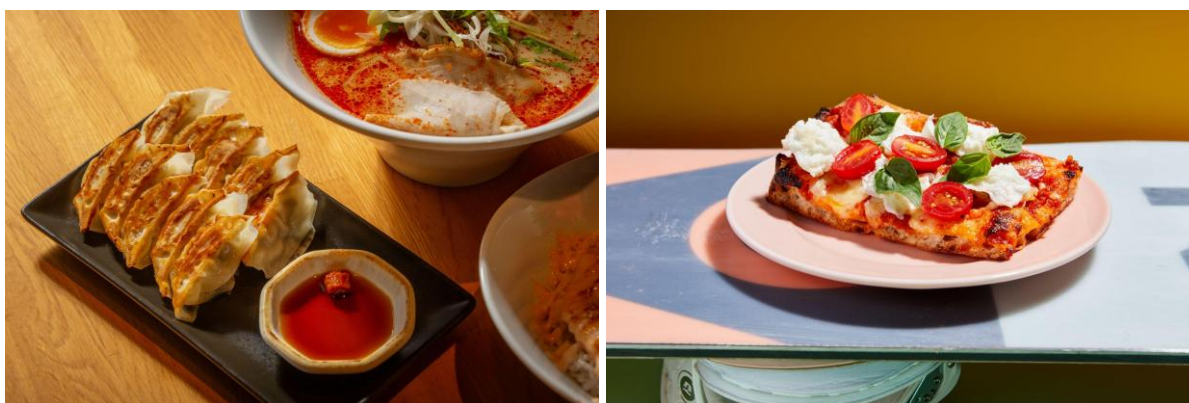
Beyond the slopes and music, festival-goers can unwind in Niseko's famous hot springs (onsen) and savour delicious Japanese cuisine. The scenic views of Mount Yotei and pop-up performances around the village further enhance this unique fusion of adrenaline and entertainment, making Snow Machine 2025 more than just a festival—it's a complete alpine escape!

Niseko-yo: At The Heart of Everything, And A Haven for Gastronomic Delights



Dive into an array of new and reimagined outlets this season at Niseko-yo, a vibrant hub blending the charms of Niseko Village with global sophistication. Indulge in a mix of gastronomic delights, bars and lounges, and high-end shopping - all set against Hokkaido's landscapes. Experience the perfect blend of traditional tastes and contemporary luxury this White Season.

Old Time Favourites: Here To Delight You Once More



Niseko-yo remains a gourmet paradise for food lovers, offering a diverse array of culinary experiences that cater to every palate. **Gogyo, powered by Ippudo**, continues to impress with its specialty ramen by day, transforming into a vibrant izakaya at night, featuring expertly grilled seasonal fare. A standout not to miss is **Baby Crosta**, by **Crosta Pizzeria**, recently ranked #12 Best Pizza in the World by 50 Top Pizza World, renowned for its artisanal pizzas crafted from high-quality ingredients.

Other culinary highlights include **Hokkaien** with its sizzling yakiniku, **Long Tang** serving delicate dim sum, and **Yang Shu Ten** offering fresh sushi and tempura.

In addition to these favourites, **Moka** showcases authentic Italian dishes made with Japanese precision, while **Chuan** tantalizes diners with its fiery Sichuan hotpot. With such an exceptional range of dining options, Niseko-yo is not only a skiing destination but also a culinary haven that continues to attract food lovers from around the world, ensuring a memorable experience for all who visit.

All-New Food Spots



By day, **Chuya Wine Bar** serves light bites and comforting dishes that warm the soul, offering a delightful menu designed to rejuvenate diners after a long day outdoors. As dusk descends, this haven transforms into a lively bar where the air buzzes with energy and inventive cocktails, featuring seasonal ingredients and unique flavour combinations, ideal for enjoying with friends after a day on the slopes.

Indulge in all-new **yatai** (kiosks) for irresistible tastes that bring the vibrant street food culture of Japan to life. Enjoy tender, rotisserie-grilled chicken at **The Rotisserie**, where each piece is marinated and slow-cooked to perfection. Alternatively, savour traditional skewered yakitori at **Tori Tori**, crafted with care and grilled over charcoal for a smoky finish. They're perfect as quick snacks or add-ons to a satisfying meal.

Yamato, Niseko-yo's new dedicated Tonkatsu restaurant, welcomes guests with its signature **Rusutsu Yotei Pork**, known for its exceptional flavour. Each cut is expertly breaded and fried to a golden crisp, served with a variety of house-made sauces, inviting diners to experience this premium Hokkaido delicacy.

Nani Kore Kani delivers the finest catch from Hokkaido's waters right to your table, ensuring that seafood lovers enjoy a feast of freshness. Focusing on minimal seasoning and meticulous cooking techniques, the authentic, delicate flavors of Hokkaido's seafood shine front and centre. Each dish is thoughtfully prepared to highlight the natural qualities of the ingredients.

Delight in an inspired dining experience rooted in rustic, meat-forward European fare at **Valhalla**, located at the highest point in Niseko next to the Niseko Gondola. This unique venue combines breathtaking views with a lively, Nordic-inspired atmosphere. Valhalla features a curated selection of craft beers and wines that complement its hearty menu, celebrating the joy of communal feasting.

Omotesando Koffee provides a remarkable coffee experience that started in Tokyo and has now expanded worldwide, drawing in coffee enthusiasts with its artisanal approach. Renowned for its minimalist style and skilled brewing methods, this café emphasizes simplicity, offering meticulously crafted beverages from espresso to pour-overs. It's a paradise for coffee lovers, where each cup is a testament to quality and craftsmanship.

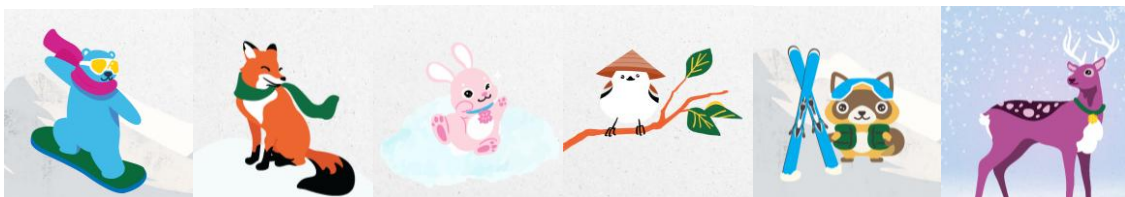
The Niseko Village Kids Club: Fun For The Little Ones

Nestled in the breathtaking beauty of Niseko, the Niseko Village Kids Club offers an enriching experience for children aged 1.5 to 9 years. While parents enjoy the slopes, little ones can explore, create, and learn in a safe and nurturing environment. With a focus on self-learning and exploration, our Montessori-inspired approach encourages independence and cognitive growth through thoughtfully designed spaces and materials.



Beyond fun and learning, the Kids Club promotes essential life skills, encouraging kindness, empathy, and responsibility. Through daily themed activities, children build cognitive, social, and emotional skills in a playful way, growing both individually and as part of a group. The curriculum includes creative workshops, STEM exploration, and cultural learning, where children experience Japanese traditions and world cultures.

Outdoor snow play immerses them in Niseko's winter wonderland, while eco-conscious activities foster teamwork and environmental responsibility. Our multilingual coaches create a culturally diverse environment, helping children develop language skills and grow into caring global citizens.



Niseko Village Kids Club introduces the **Guardians of Mount Yotei**, each with a unique character and story. **Banzai the Bear** is an expert snowboarder, **Kit the Fox** is agile and clever, and Agi the Rabbit brings energy and cuteness. **Shima the Bird** uses her graceful birdsong to protect the village and teach Japanese songs, while **Kiki the Tanuki** adds playful mischief with shapeshifting skills, leading snowman building and origami.

Yezo the Deer embodies wisdom and guides eco-conscious activities and nature walks. Together, these mascots inspire adventure, teamwork, and a connection to nature, creating a magical experience for children.

With flexible program options, including half-day, full-day, mini, and premium packages, the Kids Club caters to various needs and schedules. Whether taking a break from skiing or getting ready for the slopes, the Niseko Village Kids Club provides a memorable, joy-filled experience for every child.

Mandala Club: A Luxurious Ski-In, Ski-Out Experience This Winter Season



Mandala Club returns to Niseko Village for its second season, offering a ski-in, ski-out clubhouse experience in the heart of this world-renowned resort from 13 December 2024 to 16 March 2025. Open daily from midday till late, guests can indulge in a menu crafted by Mandala's culinary team featuring iconic Hokkaido ingredients, from oysters to Shirai Black Wagyu, along with a special kids' menu. Enjoy their 'POW(d)er lunch' for a quick and delicious 45-minute meal and unwind with après drinks starting at 4pm.

With seamless access via the Upper Village Gondola, complimentary shuttle service, and Mandala's chauffeur fleet, getting to and from the clubhouse is effortless. Book your winter getaway now at mandala.club/niseko.

Niseko Village Merchandise: Treasures from Your Winter Adventure

Discover the exclusive Niseko Village merchandise available at Niseko-yo. Featuring mini-sized tumblers, delightful soft toys, and colourful kids' apparel, these exclusive items capture the essence of Niseko, making for memorable keepsakes from your unforgettable winter journey.

Things to See: A Mesmerising Journey Of Light And Captivating Art



Embark on a mesmerising **Journey Through Light and Motion** in Niseko-yo as captured by Niseko Tourism. Watch the pristine snow transform into a vibrant canvas of colours, lights and movements. Wander pathways with projection illuminations that blend traditional and contemporary elements, creating immersive experiences that captivate the senses.



The **Ezo Artistic Odyssey** is a captivating collection of sculptures by the talented artist Frank Woo, nestled within Niseko's stunning landscapes. These remarkable pieces celebrate Hokkaido's rich folklore, tradition, and natural beauty. Encounter the enchanting Ezo Higuma, Ezo Kitakitsune, and Ezo Shimaenaga, along with their new friends Ezo Yuki Usagi, Ezo Shika, and Ezo Tanuki. Experience the essence of the region through art with these magnificent creatures.

Niseko Village is poised to deliver an unparalleled winter season, blending exceptional snow sports, diverse dining experiences, and unique cultural offerings. From pristine powder and gourmet cuisine to immersive art installations and family-friendly activities, the resort continues to set the standard for luxury winter escapes. As the White Season unfolds, Niseko Village stands ready to offer guests an unforgettable journey into the heart of Hokkaido's winter landscape.

####

About Niseko Village

Located at the south base of the 1308m Mount Niseko Annupuri, Niseko Village stands as a premier all-season destination nestled within the Niseko United ski area. This vast expanse offers access to inter-linked ski resorts boasting a combined 2,191 acres of skiable terrain, drawing comparisons to global skiing heavyweights like Aspen in Colorado and Niseko's sister city, St. Moritz in Switzerland. Central to Niseko Village's appeal is Niseko-yo, an unparalleled lifestyle experience where gastronomy, shopping, and nightlife converge amidst the captivating Hokkaido backdrop. Niseko Village encompasses Higashiyama Niseko Village, A Ritz-Carlton Reserve, one of only five Ritz-Carlton Reserves worldwide, recently honoured with a One MICHELIN Key, and the exclusive Kasara Niseko Village Townhouse, redefining alpine luxury. Also featured are Hinode Hills Niseko Village, a unique blend of residential space with luxury hotel services, and Hilton Niseko Village, which has thrice been voted 'Best Ski Resort Hotel in Japan' by World Ski Awards. The Green Leaf Niseko Village, spa and onsen facilities, a vibrant dining and retail village hub, the Niseko Village ski field - renowned for its signature dry champagne powder at low altitudes, diverse ski terrains, and the world-class Niseko Village Snow School and Niseko Kids™ programmes, all contribute to its esteemed reputation.

Find us on Facebook/Instagram [@nisekovillage](#) | [@niseko.yo](#)

About YTL Hotels

YTL Hotels owns and manages a prestigious collection of award-winning resorts, hotels, boutique experiences, and Spa Villages, with a hospitality footprint across Malaysia, Thailand, Japan, Australia, France, the Netherlands, and the United Kingdom. Notable properties include Pangkor Laut Resort, voted the World's Best Resort in 2003 by Condé Nast Traveller UK and ranked among the Top 20 Best Resorts in Asia in the 2023 Condé Nast Traveler Readers' Choice Awards US. The Gainsborough Bath Spa, part of the Small Luxury Hotels of the World's prestigious collection, was ranked the 6th Best Hotel in the UK in the 2024 Condé Nast Traveller Awards. It has also been consistently listed as one of the Top Destination Spa Resorts in the World in both the 2022 and 2023 Condé Nast Traveler Readers' Choice Awards US. Additionally, both The Gainsborough Bath Spa in the UK and Higashiyama Niseko Village, a Ritz-Carlton Reserve in Japan, have earned the prestigious Michelin Key. The Ritz-Carlton, Koh Samui was recognised in the 2023 Condé Nast Traveler Readers' Choice Awards US as one of the Top 15 Best Resorts in Thailand. Furthermore, Monkey Island Estate, Gaya Island Resort, and The Ritz-Carlton, Koh Samui have been named in the 2025 edition of Fodor's Finest as some of the Most Incredible Hotels in the World.

YTL Hotels' portfolio embodies the brand's promise of "Treasured Places, Treasured Moments" and includes the ownership and management of several Marriott International properties in Malaysia, Japan, Thailand, and Australia. This also encompasses distinctive hotels under the Autograph Collection and AC Hotels banners. Notable properties within the Marriott International partnership include The Majestic Hotel Kuala Lumpur, JW Marriott Kuala Lumpur, and Hotel Stripes Kuala Lumpur. The collaboration further features prominent hotels like The Ritz-Carlton, Koh Samui, and Higashiyama Niseko Village, a Ritz-Carlton Reserve, which was named one of TIME's World's Greatest Places 2021. As Japan's first Ritz-Carlton Reserve, it plays a key role in YTL Hotels' master plan for Niseko Village.

FOR MEDIA ENQUIRIES, PLEASE CONTACT:

Geraldine Dreiser

Vice President - Marketing & Communications

Email: geraldine@ytlhotels.com

Jessica Guzowski

Marketing & Communications

Email: jessica.guzowski@ytlhotels.com